



TAI-SAW TECHNOLOGY CO., LTD.

No. 3, Industrial 2nd Rd., Ping-Chen Industrial District,
Taoyuan, 324, Taiwan, R.O.C.

TEL: 886-3-4690038 FAX: 886-3-4697532

E-mail: tstsales@mail.taisaw.com Web: www.taisaw.com

Product Specifications Approval Sheet

Product Name: SAW Filter 678MHz SMD 3.8×3.8mm (BW=24MHz)

TST Parts No.:TA1359A

Customer Parts No.: _____

Customer signature required
Company: _____
Division: _____
Approved by : _____
Date: _____

Checked by: _____ Kevin 

Approval by: _____ Francis Chen 

Date: _____ 2011/9/6

1. Customer signed back is required before TST can proceed with sample build and receive orders.
2. Orders received without customer signed back will be regarded as agreement on the specifications.
3. Any specifications changes must be approved upon by both parties and a new revision of specifications shall be released to reflect the changes.



TAI-SAW TECHNOLOGY CO., LTD.

No. 3, Industrial 2nd Rd., Ping-Chen Industrial District,
Taoyuan, 324, Taiwan, R.O.C.

TEL: 886-3-4690038 FAX: 886-3-4697532

E-mail: tstsales@mail.taisaw.com Web: www.taisaw.com

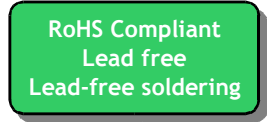
SAW Filter 678 MHz

MODEL NO.: TA1359A

REV. NO.: 1

A. MAXIMUM RATING:

1. Input Power Level: 10 dB_m
2. DC voltage: 5 V
3. Operating Temperature: -30°C to 60°C
4. Storage Temperature: -40°C to +85°C



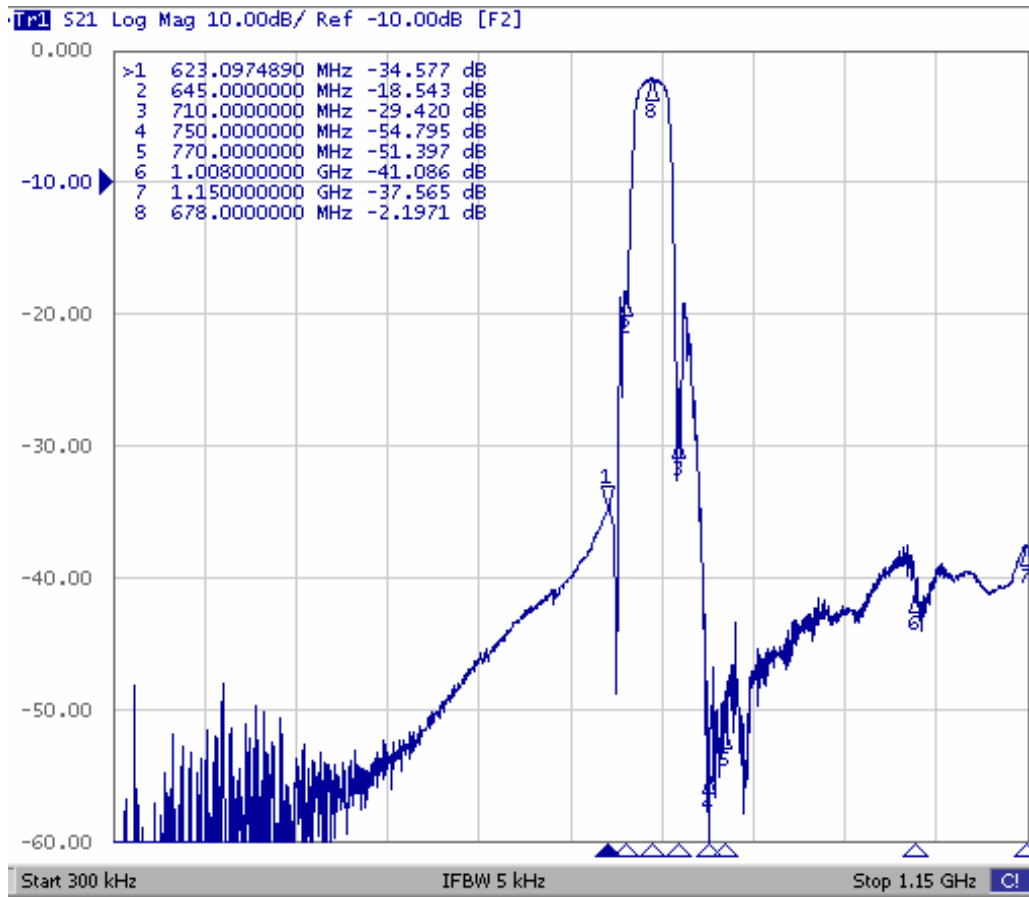
Electrostatic Sensitive Device (ESD)

B. CHARACTERISTICS:

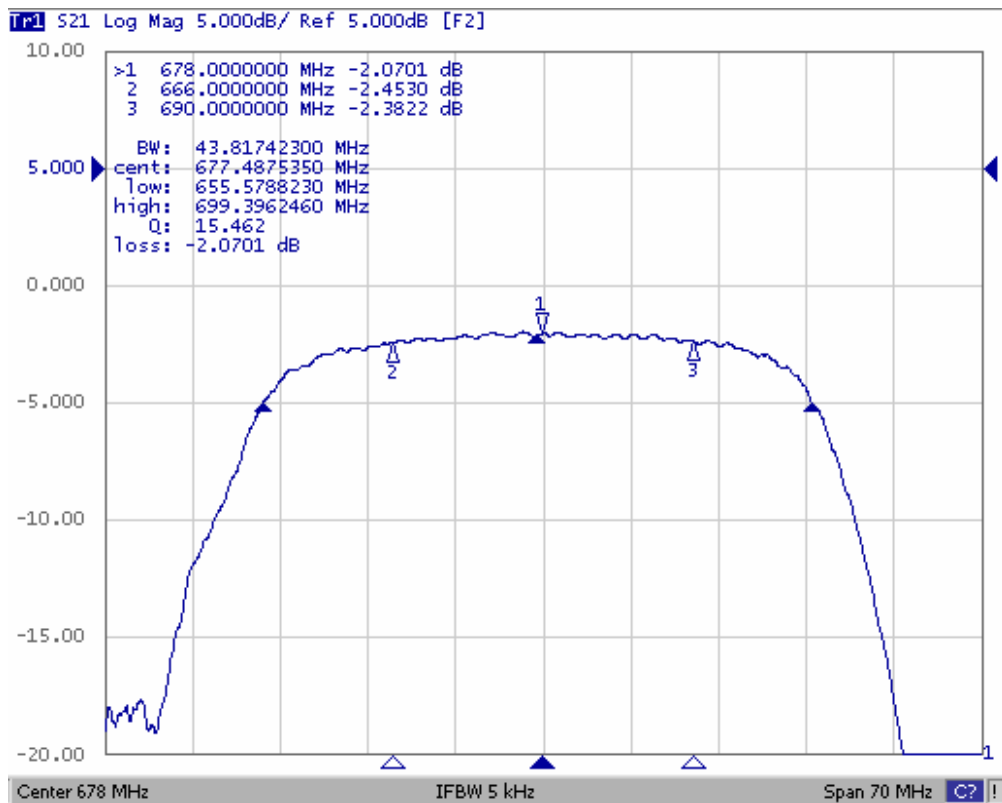
Item	Unit	Min.	Typ.	Max.
Center frequency, Fc	MHz	-	678	-
Amplitude ripple (666 ~ 690 MHz)	dB	-	1.2	1.7
Insertion loss, IL (666 ~ 690 MHz)	dB	-	2.5	3.0
Group Delay, GD (666 ~ 690 MHz)	ns	-	72	200
Bandwidth @ -3 dB		24	43	-
Attenuation (reference from 0dB)				
0.3 ~ 630 MHz	dB	30	34	-
630 ~ 645 MHz	dB	10	18	-
710 ~ 750 MHz	dB	10	29	-
750 ~ 770 MHz	dB	30	54	-
770 ~ 1008 MHz	dB	35	39	-
1008 ~ 1150 MHz	dB	35	38	-
Source impedance, Z _S	Ω	-	50	-
Load impedance, Z _L	Ω	-	50	-

Note1. No matching network required for operation at 50Ω

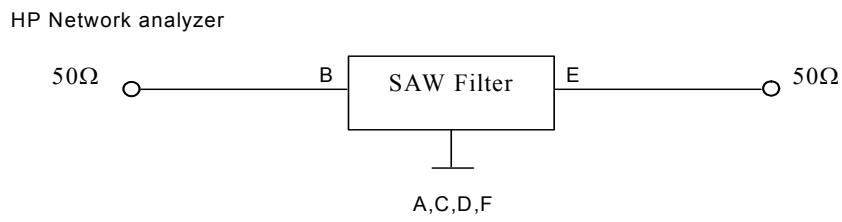
C. Transfer Function : Wideband



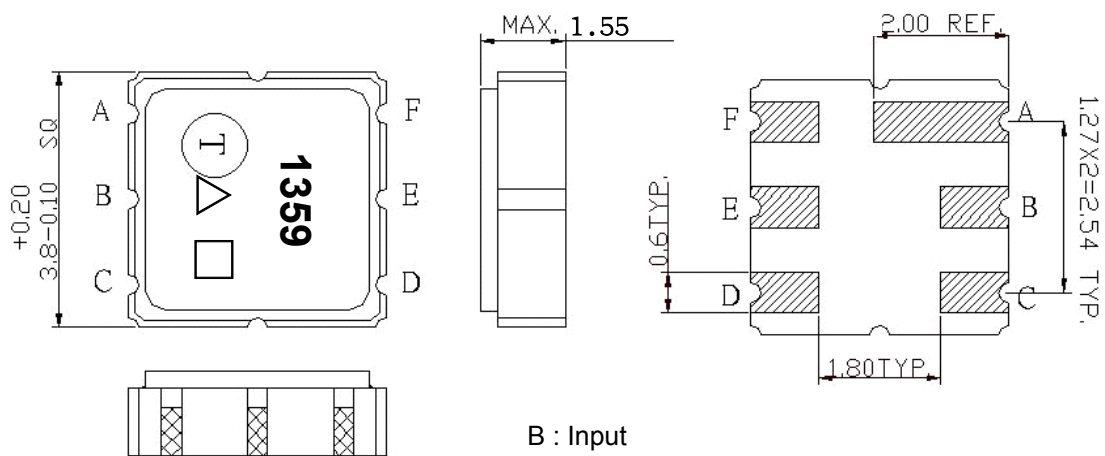
Passband



D. MEASUREMENT CIRCUIT:



E. OUTLINE DRAWING:



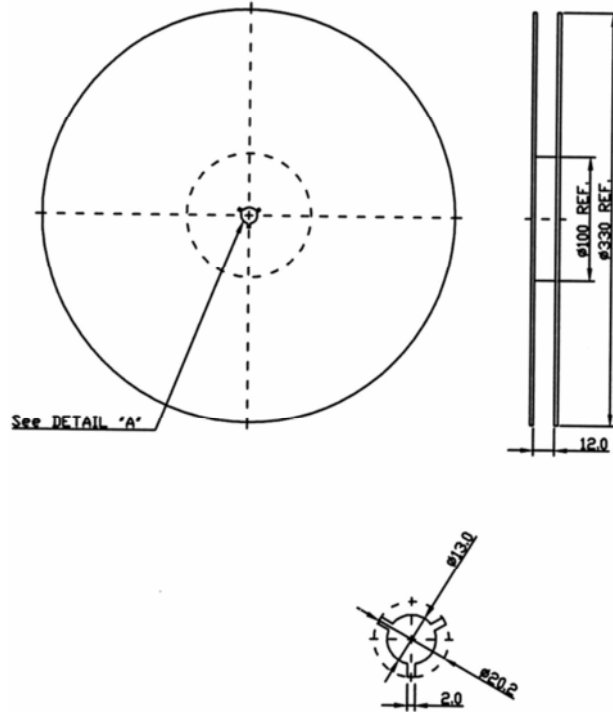
B : Input
 E : Output
 A,C,D,F Ground
 △: Year Code
 □: Date Code(Follow the table provided by planner each year.)
 Unit: mm

△ Product Year Code

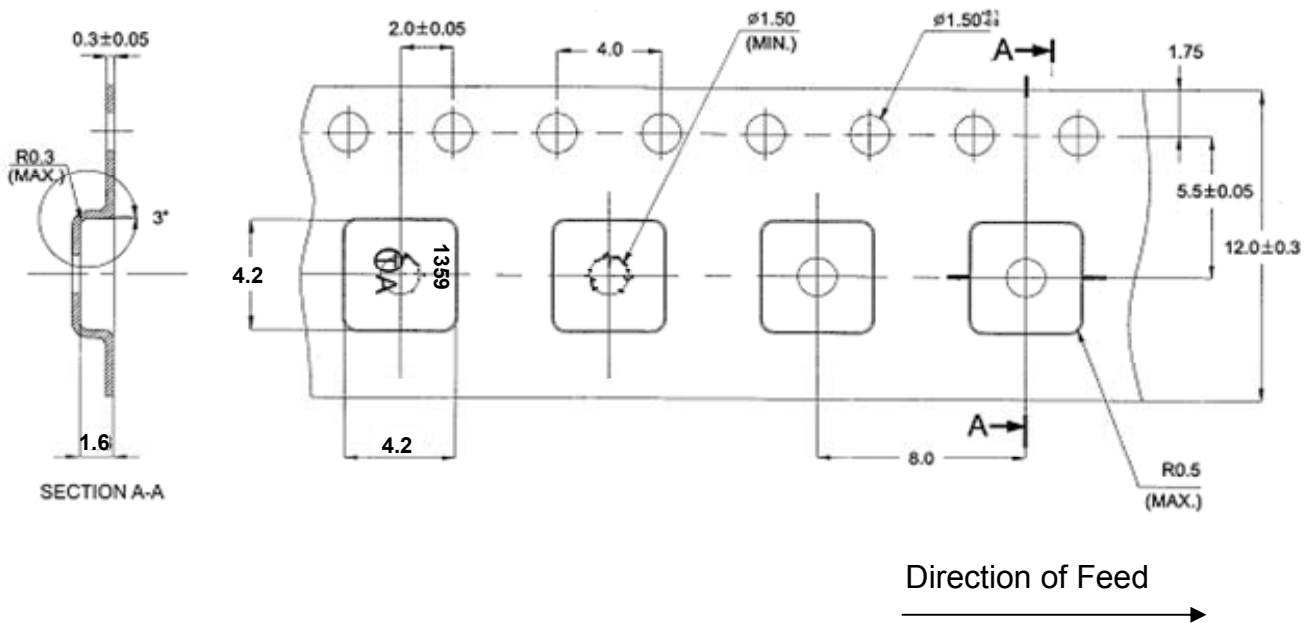
Year	2011	2012
	2013	2014
	2015	2016
Product Code	A	a

F. PACKING:

1. REEL DIMENSION



2. TAPE DIMENSION



H. RECOMMENDED REFLOW PROFILE :

