

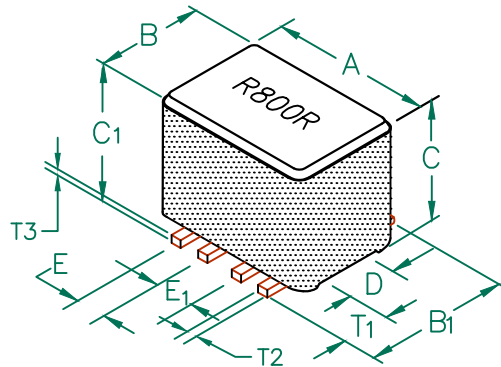
PHYSICAL DIMENSIONS:

A	6.99 [.275]	+ 0.10 [.004]
B	5.72 [.225]	+ 0.10 [.004]
B ₁	6.73 [.265]	MAX
C	4.32 [.170]	+ 0.08 [.003]
C ₁	5.00 [.197]	MAX.
D	2.41 [.095]	+ 0.08 [.003]
E	0.89 [.035]	+ 0.13 [.005]
E ₁	1.91 [.075]	+ 0.13 [.005]

WIRE:

T ₁	1.91 [.075]	+ 0.25 [.010]
T ₂	0.38 [.015]	TYP.
T ₃	0.38 [.015]	TYP.

CM2722R800R-10



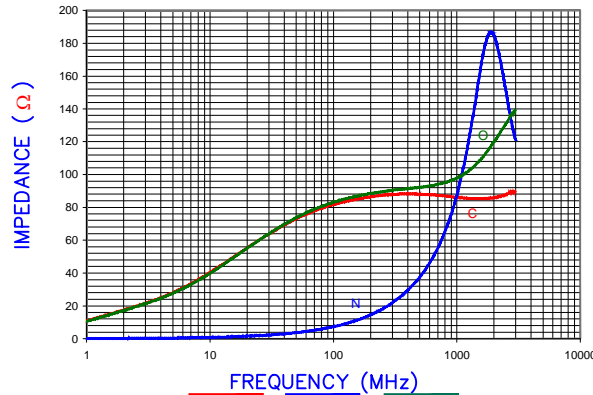
ELECTRICAL CHARACTERISTICS:		
Z @ 100MHz (Ω)	DCR (Ω)	Rated Current
Nominal	80	
Minimum	64	
Maximum	-	5,000 mA

NOTES: UNLESS OTHERWISE SPECIFIED

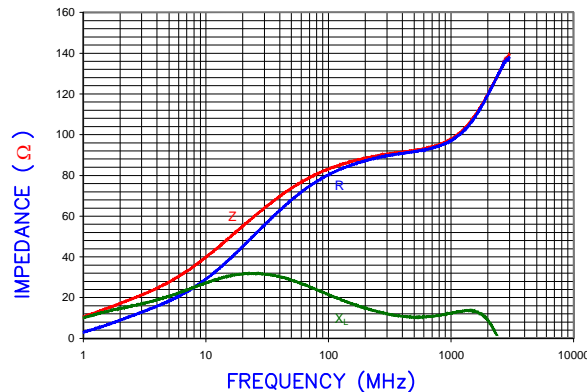
1. TAPED AND REELED per CURRENT EIA SPECIFICATIONS 13" REELS, 1000 PCS PER REEL.
2. COMPONENTS SHOULD BE ADEQUATELY PREHEATED BEFORE SOLDERING.
3. REF. CARRIER TAPE SPECIFICATION # CART2722-OP.
4. OPERATION TEMPERATURE (INCLUDING SELF-HEATING): -40 ~ +125°C.

RoHS

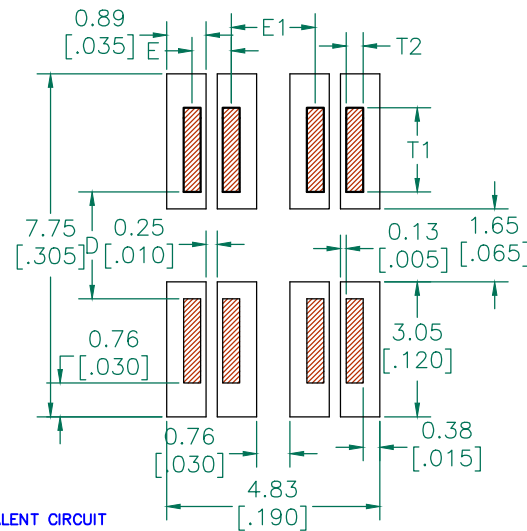
Z vs. FREQUENCY (C,O,N)



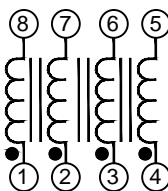
Z, R, XL vs. FREQUENCY



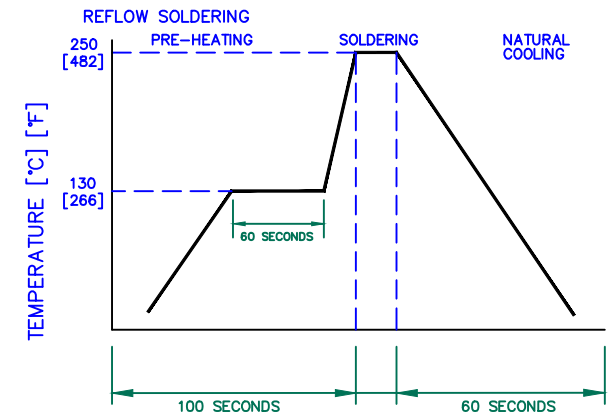
LAND PATTERNS FOR REFLOW SOLDERING



EQUIVALENT CIRCUIT NO POLARITY

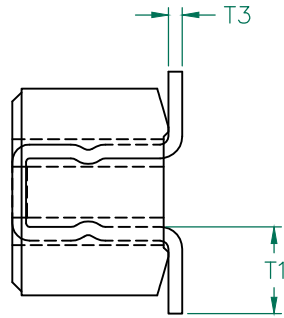
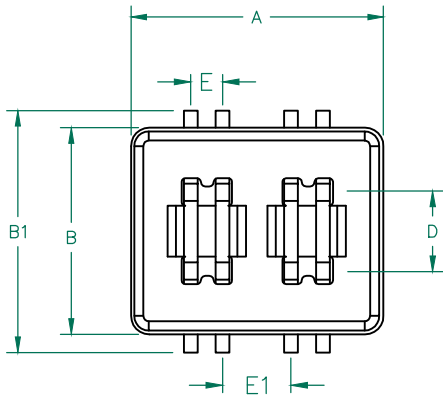


RECOMMENDED SOLDERING CONDITIONS



DIMENSIONS ARE IN mm (INCHES).

This print is the property of Laird Tech. and is loaned in confidence subject to return upon request and with the understanding that no copies shall be made without the written consent of Laird Tech. All rights to design or invention are reserved.			Laird				
D	ADD NOTE 4	08/30/12	QIU	PROJECT/PART NUMBER:	REV	PART TYPE:	DRAWN BY:
c	UPDATE COMPANY LOGO, ADD EQUIVALENT CIRCUIT	01/30/09	JRK	CM2722R800R-10	D	ASSEMBLY	JRK
B	UPDATE CO. LOGO, ADD ROHS & KGS TO WGT	11/15/07	JRK	DATE: 10/06/03	SCALE:	NTS	SHEET:
A	ORIGINAL DRAFT	10/06/03	JRK	CAD #	TOOL #		
REV	DESCRIPTION	DATE	INT	CM2722R800R-10-D-1	H0275-0		



RoHS

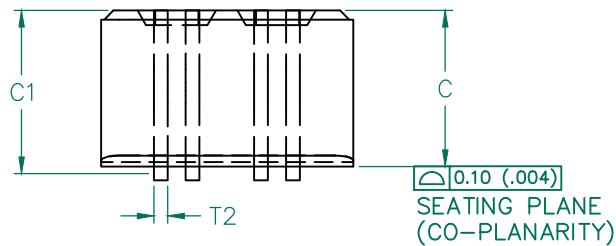
SCALE DRAWING 1:1

CM2722R800R-10

ELECTRICAL TESTING

	GROSS	GROSS
TEST:	Z	Z
# TURNS	1	1
AWG	22	22
FREQUENCY	25 MHz	100 MHz
NOMINAL	60 Ω	80 Ω
MINIMUM	45 Ω	64 Ω

WEIGHT/1000 0.725 kgs. 1.60 lbs.



DIMENSIONS:

A	6.99 [.275]	+ 0.10 [.004]
B	5.72 [.225]	+ 0.10 [.004]
B ₁	6.73 [.265]	MAX
C	4.32 [.170]	+ 0.08 [.003]
C ₁	5.00 [.197]	MAX.
D	2.41 [.095]	+ 0.08 [.003]
E	0.89 [.035]	+ 0.13 [.005]
E ₁	1.91 [.075]	+ 0.13 [.005]

WIRE DIMENSIONS:

T ₁	1.91 [.075]	+ 0.25 [.010]
T ₂	0.38 [.015]	TYP.
T ₃	0.38 [.015]	TYP.

NOTES: UNLESS OTHERWISE SPECIFIED

1. WIRE: REFERENCE STEWARD WIRE PURCHASE SPEC. WS15X15-100.
2. IMPEDANCE VALUES ARE GROSS, MEASURED USING WS15X15-100 WIRE PLACED AGAINST END OF SLOT w/ NO D.C. BIAS.
3. REFERENCE STEWARD CORE 24H0275-000.
4. NO MORE THAN 0.18 [.007] DIFFERENCE FROM THE LONGEST TO THE SHORTEST CONDUCTOR ON ONE SIDE.

DIMENSIONS ARE IN mm (INCHES).				This print is the property of Laird Tech. and is loaned in confidence subject to return upon request and with the understanding that no copies shall be made without the written consent of Laird Tech. All rights to design or invention are reserved.		Laird	
D	ADD NOTE 4	08/30/12	QIU	PROJECT/PART NUMBER:	REV	PART TYPE:	DRAWN BY:
C	UPDATE COMPANY LOGO, ADD EQUIVALENT CIRCUIT	01/30/09	JRK	CM2722R800R-10	D	ASSEMBLY	JRK
B	UPDATE CO. LOGO, ADD ROHS & KGS TO WGT	11/15/07	JRK	DATE:	SCALE:	NTS	SHEET:
A	ORIGINAL DRAFT	10/06/03	JRK	10/06/03	H0275-0		2 of 2
REV	DESCRIPTION	DATE	INT	CAD #	TOOL #		
				CM2722R800R-10-D-2			