



Product Change Notification

TE Connectivity

Product Change Notification: P-22-023406

PCN Date: 27-SEP-22

TE would like to inform you of the following change(s) to the listed TE Connectivity Product. In case of any further questions about this change(s), please contact your TE Connectivity Sales Engineer. Affected part, drawing and/or specification numbers are listed on the attached sheet(s).

General Product Description:

09 MSFL RCPT RA 318 (FM)

Description of Changes

Improved packaging method and quality of package.

current package

New Package



Other attachments:

- [Drop test report](#)
- [Package change](#)

Reason for Changes:

Product improvement.Packaging Quality

Estimated Dates:

Last Order Date (Obsolete Parts Only):	First Date To Ship (Changed Parts Only):
	31-DEC-2022
Last Ship Date (Obsolete Parts Only):	Last Date for Mixed Shipments: (Changed Parts Only):
	No Mixed Shipments

Part Number(s) being Modified:

Part Number	Part Discontinued per PCN	Customer Drawing	Customer Part Number	Alias Part Number(s)	Substitute Part Number	Substitute Alias Part Number(s)	Description Of Difference
5745781-2	NO						
5745781-3	NO						
5745781-4	NO						
5745781-6	NO						
5745782-2	NO			"2-42933-5826"			
5745782-4	NO						
5745782-6	NO						
5745783-3	NO						
5745783-4	NO						
5745783-5	NO						

Part Number	Part Discontinued per PCN	Customer Drawing	Customer Part Number	Alias Part Number(s)	Substitute Part Number	Substitute Alias Part Number(s)	Description Of Difference
5745783-6	NO						
5745784-4	NO						
5745784-6	NO						
5745984-4	NO						
5745990-3	NO						
5745992-3	NO			"2-42932-8631"			
5745994-4	NO						
5747236-4	NO						
5747236-6	NO						
5747238-4	NO						
5747238-6	NO						
5747250-2	NO						
5747250-3	NO						
5747250-4	NO						
5747250-6	NO						
5747252-4	NO						
5747840-2	NO						
5747840-3	NO						
5747840-4	NO						
5747840-5	NO						
5747840-6	NO						
5747841-2	NO						
5747841-3	NO						
5747841-4	NO						
5747841-6	NO						
5747842-2	NO						
5747842-3	NO						
5747842-4	NO						
5747842-5	NO						
5747842-6	NO						
5747843-3	NO						
5747843-4	NO			"CC2972-000", "AMP-0-5747843-4"			
5747843-6	NO						
5747844-2	NO						
5747844-3	NO			"2-42936-9892", "1374535"			
5747844-4	NO			"1363575"			
5747844-5	NO			"P698"			
5747844-6	NO			"1033323", "1352649", "1367706", "1363572"			
5747845-3	NO						
5747845-5	NO						
5747845-6	NO			"1253072"			
5747846-3	NO			"2-42936-9891"			
5747846-4	NO			"1012434-F"			
5747846-5	NO						
5747846-6	NO						
5747847-4	NO			"CC2973-000", "AMP-0-5747847-4"			
5747847-6	NO						
5788792-1	NO						
5788792-2	NO						
5788793-1	NO						
5788793-2	NO						
5788794-1	NO						
5788796-1	NO						
5788796-2	NO						
5788796-3	NO						
5788797-1	NO						
5788798-1	NO						
5788799-1	NO						
5788800-1	NO						
5788800-2	NO						
5788801-1	NO						
5788802-1	NO						
5788803-1	NO						
6-747840-9	NO						

Part Number	Part Discontinued per PCN	Customer Drawing	Customer Part Number	Alias Part Number(s)	Substitute Part Number	Substitute Alias Part Number(s)	Description Of Difference
745781-4	NO		A2100-ND				
745783-4	NO		A2102-ND	"1096472"			
745988-4	NO		A2108-ND				
747250-4	NO		A2096-ND	"A61411-000", "AMP-0-0747250-4"			
747840-4	NO			"405928391"			
747840-6	NO			"1033351"			
747841-4	NO			"27-01518-01"			
747841-6	NO			"27-01518-00"			
747843-4	NO						
747844-4	NO			"650-1042-01", "1014783-F"			
747844-5	NO						
747844-6	NO			"405796012", "27-00905-00", "650-1011-09", "1950219P002"			
747845-4	NO			"650-1044-01"			
747846-3	NO						
747846-4	NO			"405019852", "650-1150-01", "1104337"			
747846-6	NO			"405467945"			
747847-4	NO			"650-1067-01"			

Part Number(s) being Modified:

Part Number	Part Discontinued per PCN	Customer Drawing	Customer Part Number	Alias Part Number(s)	Substitute Part Number	Substitute Alias Part Number(s)	Description Of Difference
5745783-4	NO						
5747238-4	NO						
5747250-4	NO						
5747250-6	NO						
5747841-6	NO						
5747846-3	NO			"2-42936-9891"			

Part Number(s) being Modified:

Part Number	Part Discontinued per PCN	Customer Drawing	Customer Part Number	Alias Part Number(s)	Substitute Part Number	Substitute Alias Part Number(s)	Description Of Difference
5745781-2	NO						
5745781-3	NO						
5745781-4	NO						
5745781-6	NO						
5745782-2	NO			"2-42933-5826"			
5745782-4	NO						
5745782-6	NO						
5745783-3	NO						
5745783-4	NO						
5745783-5	NO						

Part Number	Part Discontinued per PCN	Customer Drawing	Customer Part Number	Alias Part Number(s)	Substitute Part Number	Substitute Alias Part Number(s)	Description Of Difference
5745783-6	NO						
5745784-4	NO						
5745784-6	NO						
5745984-4	NO						
5745990-3	NO						
5745992-3	NO			"2-42932-8631"			
5745994-4	NO						
5747236-4	NO						
5747236-6	NO						
5747238-4	NO						
5747238-6	NO						
5747250-2	NO						
5747250-3	NO						
5747250-4	NO						
5747250-6	NO						
5747252-4	NO						
5747840-2	NO						
5747840-3	NO						
5747840-4	NO						
5747840-5	NO						
5747840-6	NO						
5747841-2	NO						
5747841-3	NO						
5747841-4	NO						
5747841-6	NO						
5747842-2	NO						
5747842-3	NO						
5747842-4	NO						
5747842-5	NO						
5747842-6	NO						
5747843-3	NO						
5747843-4	NO			"CC2972-000", "AMP-0-5747843-4"			
5747843-6	NO						

Part Number	Part Discontinued per PCN	Customer Drawing	Customer Part Number	Alias Part Number(s)	Substitute Part Number	Substitute Alias Part Number(s)	Description Of Difference
5747844-2	NO						
5747844-3	NO			"2-42936-9892", "1374535"			
5747844-4	NO			"1363575"			
5747844-5	NO			"P698"			
5747844-6	NO			"1033323", "1352649", "1367706", "1363572"			
5747845-3	NO						
5747845-5	NO						
5747845-6	NO			"1253072"			
5747846-3	NO			"2-42936-9891"			
5747846-4	NO			"1012434-F"			
5747846-5	NO						
5747846-6	NO						
5747847-4	NO			"CC2973-000", "AMP-0-5747847-4"			
5747847-6	NO						
5788792-1	NO						
5788792-2	NO						
5788793-1	NO						
5788793-2	NO						
5788794-1	NO						
5788796-1	NO						
5788796-2	NO						
5788796-3	NO						
5788797-1	NO						
5788798-1	NO						
5788799-1	NO						
5788800-1	NO						
5788800-2	NO						
5788801-1	NO						
5788802-1	NO						
5788803-1	NO						
6-747840-9	NO						
745781-4	NO		A2100-ND				
745783-4	NO		A2102-ND	"1096472"			
745988-4	NO		A2108-ND				
747250-4	NO		A2096-ND	"A61411-000", "AMP-0-0747250-4"			

Part Number	Part Discontinued per PCN	Customer Drawing	Customer Part Number	Alias Part Number(s)	Substitute Part Number	Substitute Alias Part Number(s)	Description Of Difference
747840-4	NO			"405928391"			
747840-6	NO			"1033351"			
747841-4	NO			"27-01518-01"			
747841-6	NO			"27-01518-00"			
747843-4	NO						
747844-4	NO			"650-1042-01", "1014783-F"			
747844-5	NO						
747844-6	NO			"405796012", "27-00905-00", "650-1011-09", "1950219P002"			
747845-4	NO			"650-1044-01"			
747846-3	NO						
747846-4	NO			"405019852", "650-1150-01", "1104337"			
747846-6	NO			"405467945"			
747847-4	NO			"650-1067-01"			

TEST RECORD Tyco Electronics Corporation	Title of Test Package for Front Load	Test Drop test	
	Tester	Date Started 9/8/2022	Date Complete 9/8/2022
Requester	Weight 11.500 lb	Quantity 260	
Product Description 37 MSFL RCPT RA 318 (SL,FM)	Part No See table 1	No of Boxes 1	

Table 1

Material	Object description
5745781-2	09 MSFL RCPT RA 318 (FM)
5745781-3	09 MSFL RCPT RA 318 (IN,FM)
5745781-4	09 MSFL RCPT RA 318 (IN,FM)
5745781-6	09 MSFL RCPT RA 318 (SL,FM)
5745782-2	15 MSFL RCPT RA 318 (FM)
5745782-4	15 MSFL RCPT RA 318 (IN,FM)
5745782-6	15 MSFL RCPT RA 318 (SL,FM)
5745783-2	25 MSFL RCPT RA 318 (FM)
5745783-3	25 MSFL RCPT RA 318 (IN,FM)
5745783-4	25 MSFL RCPT RA 318 (IN,FM)
5745783-5	25 MSFL RCPT RA 318 (SL,FM)
5745783-6	25 MSFL RCPT RA 318 (SL,FM)
5745784-4	37 MSFL RCPT RA 318 (IN,FM)
5745784-6	37 MSFL RCPT RA 318 (SL,FM)
5745984-4	15 MSFL RCPT RA 590 (IN,FM)
5745988-4	09 MSFL RCPT RA 590 (IN,FM)
5745988-6	09 MSFL RCPT RA 590 (SL,FM)
5745990-3	09 MSFL PLUG RA 590 (IN,FM)
5745992-3	25 MSFL RCPT RA 590 (IN,FM)
5745992-3	25 MSFL RCPT RA 590 (IN,FM)
5745994-4	25 MSFL PLUG RA 590 (IN,FM)
5747236-4	15 MSFL PLUG RA 318 (IN,FM)
5747236-6	15 MSFL PLUG RA 318 (SL,FM)
5747238-2	25 MSFL PLUG RA 318 (FM)
5747238-3	25 MSFL PLUG RA 318 (IN,FM)
5747238-4	25 MSFL PLUG RA 318 (IN,FM)
5747238-6	25 MSFL PLUG RA 318 (SL,FM)
5747250-2	09 MSFL PLUG RA 318 (FM)
5747250-3	09 MSFL PLUG RA 318 (IN,FM)
5747250-4	09 MSFL PLUG RA 318 (IN,FM)
5747250-6	09 MSFL PLUG RA 318 (SL,FM)
5747252-4	37 MSFL PLUG RA 318 (IN,FM)
5747840-2	HD-20 PLUG RA .318 FMS BD-LK
5747840-3	HD-20 PLUG RA .318 FMS BD-LK 4

5747840-4 HD-20 PLUG RA .318 FMS BD-LK 4
5747840-5 HD-20 PLUG RA .318 FMS BD-LK S
5747840-6 HD-20 PLUG RA .318 FMS BD-LK S
5747841-2 15 MSFL PLUG RA 318 (FM,BL)
5747841-3 15 MSFL PLUG RA 318 (IN,FM,BL)
5747841-4 15 MSFL PLUG RA 318 (IN,FM,BL)
5747841-6 15 MSFL PLUG RA 318 (SL,FM,BL)
5747842-2 25 MSFL PLUG RA 318 (FM,BL)
5747842-3 25 MSFL PLUG RA 318 (IN,FM,BL)
5747842-4 25 MSFL PLUG RA 318 (IN,FM,BL)
5747842-5 25 MSFL PLUG RA 318 (SL,FM,BL)
5747842-6 25 MSFL PLUG RA 318 (SL,FM,BL)
5747843-3 37 MSFL PLUG RA 318 (IN,FM,BL)
5747843-4 37 MSFL PLUG RA 318 (IN,FM,BL)
5747843-6 37 MSFL PLUG RA 318 (SL,FM,BL)
5747844-2 09 MSFL RCPT RA 318 (FM,BL)
5747844-3 09 MSFL RCPT RA 318 (IN,FM,BL)
5747844-4 09 MSFL RCPT RA 318 (IN,FM,BL)
5747844-5 09 MSFL RCPT RA 318 (SL,FM,BL)
5747844-6 09 MSFL RCPT RA 318 (SL,FM,BL)
5747845-3 15 MSFL RCPT RA 318 (IN,FM,BL)
5747845-4 15 MSFL RCPT RA 318 (IN,FM,BL)
5747845-5 15 MSFL RCPT RA 318 (SL,FM,BL)
5747845-6 15 MSFL RCPT RA 318 (SL,FM,BL)
5747846-2 25 MSFL RCPT RA 318 (FM,BL)
5747846-3 25 MSFL RCPT RA 318 (IN,FM,BL)
5747846-4 25 MSFL RCPT RA 318 (IN,FM,BL)
5747846-5 25 MSFL RCPT RA 318 (SL,FM,BL)
5747846-6 25 MSFL RCPT RA 318 (SL,FM,BL)
5747847-4 37 MSFL RCPT RA 318 (IN,FM,BL)
5747847-6 37 MSFL RCPT RA 318 (SL,FM,BL)
5788792-1 09 HTMSFL PLUG RA 318 (IN,BL)
5788792-2 09 HTMSFL PLUG RA 318 (IN,BL)
5788793-1 09 HTMSFL PLUG RA 318 (SL,BL)
5788793-2 09 HTMSFL PLUG RA 318 (SL,BL)
5788794-1 25 HTMSFL PLUG RA 318 (IN,BL)
5788795-1 25 HTMSFL PLUG RA 318 (SL,BL)
5788796-1 09 HTMSFL ASSY RA 318 (IN,BL)
5788796-2 09 HTMSFL ASSY RA 318 (IN,BL)
5788797-1 09 HTMSFL ASSY RA 318 (SL,BL)
5788797-2 09 HTMSFL ASSY RA 318 (SL,BL)
5788798-1 15 HTMSFL ASSY RA 318 (IN,BL)
5788799-1 15 HTMSFL ASSY RA 318 (SL,BL)
5788800-1 25 HTMSFL ASSY RA 318 (IN,BL)
5788800-1 25 HTMSFL ASSY RA 318 (IN,BL)
5788801-1 25 HTMSFL ASSY RA 318 (SL,BL)
5788801-2 25 HTMSFL ASSY RA 318 (SL,BL)
5788802-1 37 HTMSFL ASSY RA 318 (IN,BL)
5788803-1 HD-20 RCPT 9P RA FFSCRLK HT

6-747840-9	9P RA MSFL 318 PLUG
7-747840-1	9P RA MSFL 318 PLUG
745781-4	09 MSFL RCPT RA 318 (IN,FM)
745781-6	09 MSFL RCPT RA 318 (SL,FM)
745783-4	25 MSFL RCPT RA 318 (IN,FM)
745784-4	37 MSFL RCPT RA 318 (IN,FM)
745988-4	09 MSFL RCPT RA 590 (IN,FM)
747238-4	25 MSFL PLUG RA 318 (IN,FM)
747238-6	25 MSFL PLUG RA 318 (SL,FM)
747250-4	09 MSFL PLUG RA 318 (IN,FM)
747250-6	09 MSFL PLUG RA 318 (SL,FM)
747840-4	09 MSFL PLUG RA 318 (IN,FM,BL)
747840-6	09 MSFL PLUG RA 318 (SL,FM,BL)
747841-4	15 MSFL PLUG RA 318 (IN,FM,BL)
747841-6	15 MSFL PLUG RA 318 (SL,FM,BL)
747842-4	25 MSFL PLUG RA 318 (IN,FM,BL)
747842-6	25 MSFL PLUG RA 318 (SL,FM,BL)
747843-4	37 MSFL PLUG RA 318 (IN,FM,BL)
747844-3	09 MSFL RCPT RA 318 (IN,FM,BL)
747844-4	09 MSFL RCPT RA 318 (IN,FM,BL)
747844-5	09 MSFL RCPT RA 318 (SL,FM,BL)
747844-6	09 MSFL RCPT RA 318 (SL,FM,BL)
747845-3	15 MSFL RCPT RA 318 (IN,FM,BL)
747845-4	15 MSFL RCPT RA 318 (IN,FM,BL)
747845-6	15 MSFL RCPT RA 318 (SL,FM,BL)
747846-6	25 MSFL RCPT RA 318 (SL,FM,BL)
747847-4	37 MSFL RCPT RA 318 (IN,FM,BL)
747847-6	37 MSFL RCPT RA 318 (SL,FM,BL)
788792-1	09 HTMSFL PLUG RA 318 (IN,BL)
788796-1	09 HTMSFL ASSY RA 318 (IN,BL)
788800-1	25 HTMSFL ASSY RA 318 (IN,BL)

TEST PROCEDURE:

This test was made following the document of TE packaging specification. number 107-18078, following the extra level.

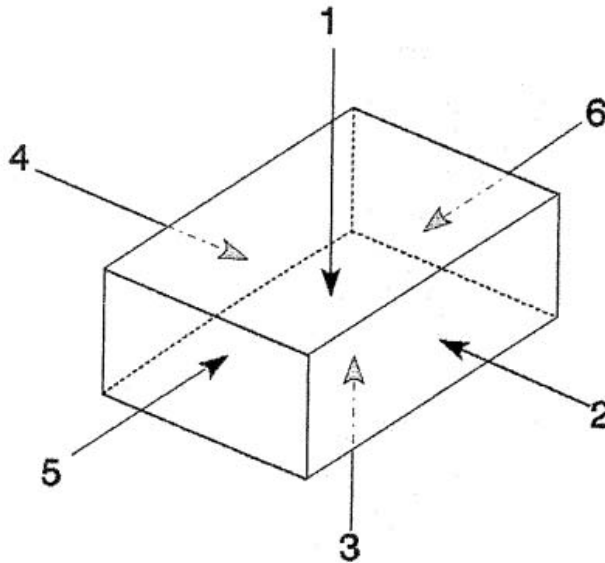


Figure 1

Test Procedure		
Drop	Standard Level	Extra Level
1	Corner 3-4-5	Corner 3-4-5
2	Edge 3-5	Edge 3-5
3	Face 5	Edge 3-4
4		Edge 4-5
5		Face 5
6		Face 4
7		Face 3

After each drop there should be a visual appraisal of the packaging without changing neither packaging nor the position of the product.

LOCATION: Calle Latitud Oriente #22, Colonia Parque industrial Latitud, CP 83174 Hermosillo, Sonora, Mexico

PRODUCT PACKAGING DESCRIPTION:

PLACE 52 PC OF CONNECTORS INTO TRAY, MATING FACE DOWN.
 PLACE CORRUGATED LID ON TRAY FOLDING PERFORATION OVER OPEN END OF TRAY,
 MIDDLE DIVIDER IN TRAY UP THROUGH LID.
 SECURE LID TO TRAY WITH 4 RUBBER BANDS PLACING TWO ALONG THE LENGTH AND TWO ACCROSS THE WIDTH OF THE TRAY.
 AFFIX LABEL TO TRAY LID.

SET UP BOX.
PLACE FIVE TRAYS INTO
BOX.
FILL VOIDS WITH BUBBLE CUSHIONING IF
NEEDED.
CLOSE, SECURE AND LABEL BOX..

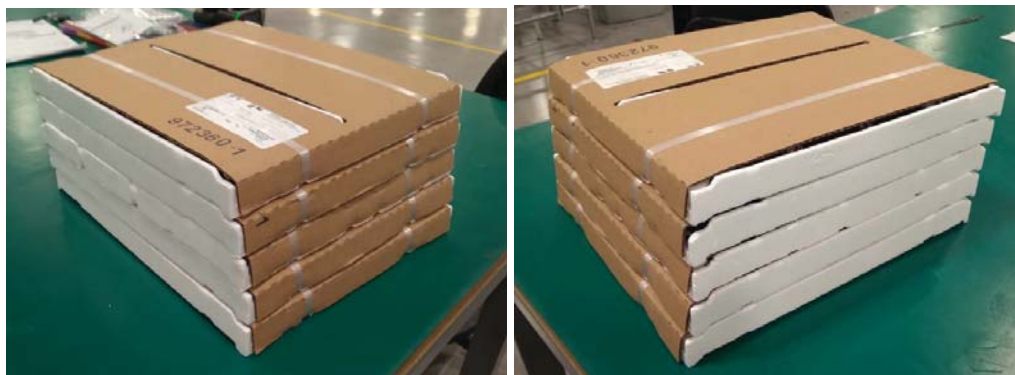
DROP HEIGHT:

The drop height was 38 inches.



RESULTS:

BEFORE TEST:

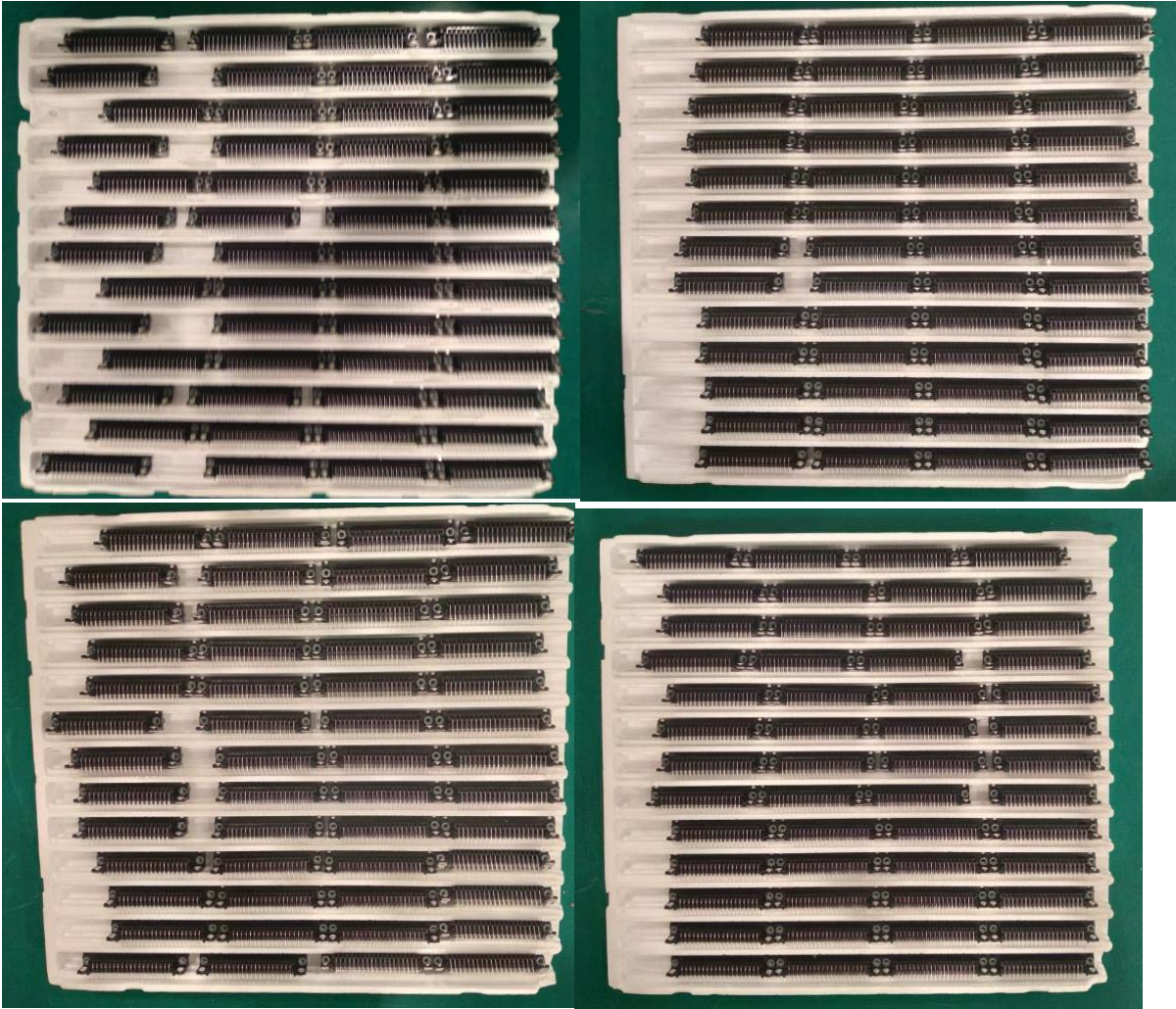


AFTER TEST





No part were damaged in the test.





Package Change

EVERY CONNECTION COUNTS



Current package



Proposed package

Improved packaging method does not require manual force to secure the tray with a new semi-automatic process.

The main objective is to improve the quality of the package.





Part Number Affected

09 positions

Type Receptable

Part Number	Description
5745781-2	09 MSFL RCPT RA 318 (FM)
5745781-3	09 MSFL RCPT RA 318 (IN,FM)
5745781-4	09 MSFL RCPT RA 318 (IN,FM)
5745781-6	09 MSFL RCPT RA 318 (SL,FM)
5747844-2	09 MSFL RCPT RA 318 (FM,BL)
5747844-3	09 MSFL RCPT RA 318 (IN,FM,BL)
5747844-4	09 MSFL RCPT RA 318 (IN,FM,BL)
5747844-5	09 MSFL RCPT RA 318 (SL,FM,BL)
5747844-6	09 MSFL RCPT RA 318 (SL,FM,BL)
5788796-1	09 HTMSFL ASSY RA 318 (IN,BL)
5788796-2	09 HTMSFL ASSY RA 318 (IN,BL)
5788796-3	09 HTMSFL ASSY RA 318 (IN, BL)
5788797-1	09 HTMSFL ASSY RA 318 (SL,BL)
745781-4	09 MSFL RCPT RA 318 (IN,FM)
745781-6	09 MSFL RCPT RA 318 (SL,FM)
747844-4	09 MSFL RCPT RA 318 (IN,FM,BL)
747844-5	09 MSFL RCPT RA 318 (SL,FM,BL)
747844-6	09 MSFL RCPT RA 318 (SL,FM,BL)
788796-1	09 HTMSFL ASSY RA 318 (IN,BL)
5745988-4	09 MSFL RCPT RA 590 (IN,FM)
5745988-6	09 MSFL RCPT RA 590 (SL,FM)
745988-4	09 MSFL RCPT RA 590 (IN,FM)

Type Plug

Part Number	Description
5747250-2	09 MSFL PLUG RA 318 (FM)
5747250-3	09 MSFL PLUG RA 318 (IN,FM)
5747250-4	09 MSFL PLUG RA 318 (IN,FM)
5747250-6	09 MSFL PLUG RA 318 (SL,FM)
5788792-1	09 HTMSFL PLUG RA 318 (IN,BL)
5788792-2	09 HTMSFL PLUG RA 318 (IN,BL)
5788793-1	09 HTMSFL PLUG RA 318 (SL,BL)
5788793-2	09 HTMSFL PLUG RA 318 (SL,BL)
747250-4	09 MSFL PLUG RA 318 (IN,FM)
747840-4	09 MSFL PLUG RA 318 (IN,FM,BL)
747840-6	09 MSFL PLUG RA 318 (SL,FM,BL)
788792-1	09 HTMSFL PLUG RA 318 (IN,BL)
5745990-3	09 MSFL PLUG RA 590 (IN,FM)
5747840-2	HD-20 PLUG RA .318 FMS BD-LK
5747840-3	HD-20 PLUG RA .318 FMS BD-LK 4
5747840-4	HD-20 PLUG RA .318 FMS BD-LK 4
5747840-5	HD-20 PLUG RA .318 FMS BD-LK S
5747840-6	HD-20 PLUG RA .318 FMS BD-LK S
6-747840-9	9P RA MSFL 318 PLUG



Part Number Affected

15 positions

Type Receptable

Part Number	Description
5745782-2	15 MSFL RCPT RA 318 (FM)
5745782-4	15 MSFL RCPT RA 318 (IN,FM)
5745782-6	15 MSFL RCPT RA 318 (SL,FM)
5747845-3	15 MSFL RCPT RA 318 (IN,FM,BL)
5747845-4	15 MSFL RCPT RA 318 (IN,FM,BL)
5747845-5	15 MSFL RCPT RA 318 (SL,FM,BL)
5747845-6	15 MSFL RCPT RA 318 (SL,FM,BL)
5788798-1	15 HTMSFL ASSY RA 318 (IN,BL)
5788799-1	15 HTMSFL ASSY RA 318 (SL,BL)
747845-4	15 MSFL RCPT RA 318 (IN,FM,BL)
5745984-4	15 MSFL RCPT RA 590 (IN,FM)

Type Plug

Part Number	Description
5747236-4	15 MSFL PLUG RA 318 (IN,FM)
5747236-6	15 MSFL PLUG RA 318 (SL,FM)
5747841-2	15 MSFL PLUG RA 318 (FM,BL)
5747841-3	15 MSFL PLUG RA 318 (IN,FM,BL)
5747841-4	15 MSFL PLUG RA 318 (IN,FM,BL)
5747841-6	15 MSFL PLUG RA 318 (SL,FM,BL)
747841-4	15 MSFL PLUG RA 318 (IN,FM,BL)
747841-6	15 MSFL PLUG RA 318 (SL,FM,BL)



Part Number Affected

25 positions

Type Receptable

Part Number	Description
5745783-2	25 MSFL RCPT RA 318 (FM)
5745783-3	25 MSFL RCPT RA 318 (IN,FM)
5745783-4	25 MSFL RCPT RA 318 (IN,FM)
5745783-5	25 MSFL RCPT RA 318 (SL,FM)
5745783-6	25 MSFL RCPT RA 318 (SL,FM)
5747846-2	25 MSFL RCPT RA 318 (FM,BL)
5747846-3	25 MSFL RCPT RA 318 (IN,FM,BL)
5747846-4	25 MSFL RCPT RA 318 (IN,FM,BL)
5747846-5	25 MSFL RCPT RA 318 (SL,FM,BL)
5747846-6	25 MSFL RCPT RA 318 (SL,FM,BL)
5788800-1	25 HTMSFL ASSY RA 318 (IN,BL)
5788800-2	25 HTMSFL ASSY RA 318 (IN,BL)
5788801-1	25 HTMSFL ASSY RA 318 (SL,BL)
745783-4	25 MSFL RCPT RA 318 (IN,FM)
747846-3	25 MSFL RCPT RA 318 (IN,FM,BL)
747846-4	25 MSFL RCPT RA 318 (IN,FM,BL)
747846-6	25 MSFL RCPT RA 318 (SL,FM,BL)
5745992-3	25 MSFL RCPT RA 590 (IN,FM)

Type Plug

Part Number	Description
5747238-2	25 MSFL PLUG RA 318 (FM)
5747238-4	25 MSFL PLUG RA 318 (IN,FM)
5747238-6	25 MSFL PLUG RA 318 (SL,FM)
5747842-2	25 MSFL PLUG RA 318 (FM,BL)
5747842-3	25 MSFL PLUG RA 318 (IN,FM,BL)
5747842-4	25 MSFL PLUG RA 318 (IN,FM,BL)
5747842-5	25 MSFL PLUG RA 318 (SL,FM,BL)
5747842-6	25 MSFL PLUG RA 318 (SL,FM,BL)
5788794-1	25 HTMSFL PLUG RA 318 (IN,BL)
5788795-1	25 HTMSFL PLUG RA 318 (SL,BL)
747238-4	25 MSFL PLUG RA 318 (IN,FM)
5745994-4	25 MSFL PLUG RA 590 (IN,FM)



Part Number Affected

37 positions

Type Receptable

Part Number	Description
5745784-4	37 MSFL RCPT RA 318 (IN,FM)
5745784-6	37 MSFL RCPT RA 318 (SL,FM)
5747847-4	37 MSFL RCPT RA 318 (IN,FM,BL)
5747847-6	37 MSFL RCPT RA 318 (SL,FM,BL)
5788802-1	37 HTMSFL ASSY RA 318 (IN,BL)
747847-4	37 MSFL RCPT RA 318 (IN,FM,BL)
747847-6	37 MSFL RCPT RA 318 (SL,FM,BL)

Type Plug

Part Number	Description
5747252-4	37 MSFL PLUG RA 318 (IN,FM)
5747843-3	37 MSFL PLUG RA 318 (IN,FM,BL)
5747843-4	37 MSFL PLUG RA 318 (IN,FM,BL)
5747843-6	37 MSFL PLUG RA 318 (SL,FM,BL)
747252-4	37 MSFL PLUG RA 318 (IN,FM)
747843-4	37 MSFL PLUG RA 318 (IN,FM,BL)